

uFace 800

Multi-Biometric Time Attendance and Access Control Terminal



uFace800 facial multi-biometric time & attendance and access control terminal supports up to 3,000 face templates, 3,000 fingerprint templates and 10,000 cards.

With ZKTeco latest hardware platform and algorithm, it offers brand new UI and user-friendly operation interface to provide smooth user experience.

With advanced face algorithm and multi-biometric verification technology, the terminal's security level of verification is significantly enhanced.

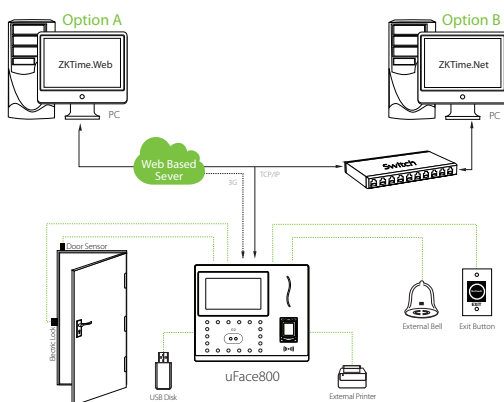
Features

- 3,000 face and 3,000 fingerprint templates
- Multi-language
- High verification speed
- Advanced and user-friendly UI
- Optional built-in battery backup, providing approximately 4 hours of continuous operation
- New Framework firmware, easy to extend functions and customize client's requirements
- One face template is registered for one user only
- Able to detect whether the face is an actual face or a photo, enhancing the security level of verification

Specifications

	uFace800
Display	4.3-Inch Touch Screen
Face capacity	3,000
Fingerprint capacity	3,000
ID Card capacity	10,000
Logs capacity	100,000
Communication	TCP/IP, USB Host, WiFi (optional)
Standard Functions	Automatic Status Switch, Self-Service Query, Work Code, SMS, DST, T9 Input, 9 Digit User ID, Scheduled Bell, Photo ID
Optional Functions	MF Card, 3G, ADMS, 2000 mAh Backup Battery
Power Supply	12V 3A
Operating Temperature	0 °C- 45 °C
Operating Humidity	20%-80%
Dimensions(Length*Width*Thickness)	193.6 × 165 × 111mm
Package Weight(KG)	1.87

Configuration



What's in the Box

